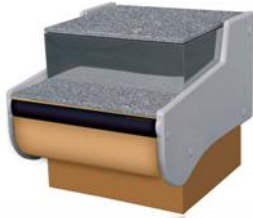


Z.E.Ch. IGLOO product catalogue, group: Neutral counters

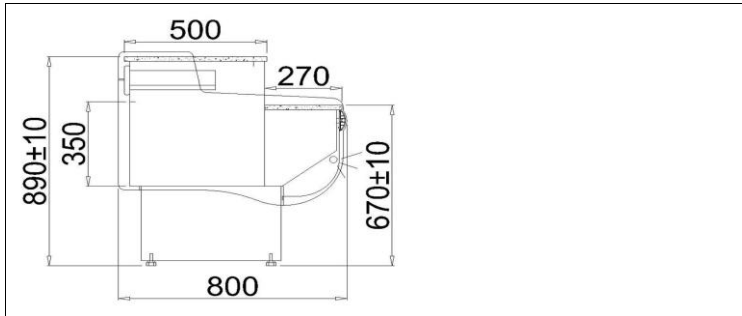


LADA MONIKA

Type: LADA MONIKA
2/0.5
ID: LS/MO500



Management Service
ISO 9001: 2000



STANDARD

- front fender - color selection possible
- White-painted external body
- Small legs dedicated to level the counter
- work surface - granite, grey

Colour scheme

Paint colors



Base fender colors



Aluminium sections colors



Plexiglass colors



ABS sides



Technical parameters

Length without sides [mm]	500
Length with sides [mm]	580
Depth [mm]	800
Unit weight [mm]	50
Height [mm]	890+/-10

Additional options add. cost

- side panels of ABS plastic - color selection possible
- base fender - color selection possible
- front panel with lightning - plexiglass color selection possible
- work surface - granite, Balmoral
- front-line panel and/or base options colours